



2022 YEAR IN REVIEW NEWSLETTER



SAN FRANCISCO SAFEHOUSE

MESSAGE FROM THE BOARD OF DIRECTORS

by **Julietta Hua, Board Chair**



This was a year of exciting transitions for Safehouse! The Safehouse family has grown, as Toni and her executive team have been laying the groundwork toward establishing a permanent supportive housing program.

We've welcomed new staff, including Angela Green (Hope Center Program Manager) and Rhee Pates (Program Manager of the Transitional House), and long-time Director of Programs Kristen Moore welcomes a new baby into her family. The Board of Directors is also excited to have Colleen Ma (Tenderloin Neighborhood Development Corporation), Sean Saxton (Lay Pastor for Transgender Ministries and Prayer Ministries at City of Refuge, United Church of Christ), Pamela Merchant (former interim Executive Director of SafeHouse), and Anil Comelo (City Manager, St Helena) join the Safehouse community in 2022.

Colleen brings professional experience working with permanent supportive housing projects. Sean has life-long experience in non-profit and community organizing with transgender men of color to ensure mental, spiritual, economic health and well-being. Pamela is an advisor for human rights non-profits around leadership, governance, and strategy. Anil brings extensive experience in human resources as a civil servant committed to working for the public good (from the city of San Rafael to the city of Richmond).

Safehouse addresses on-going needs around sexual exploitation, housing insecurity, and queer and transphobia, made more acute with recent incursions on reproductive and sexual freedom, and with the on-going rise of white supremacy, anti-Semitism, and xenophobia. Transitions are always challenging and sometimes even dangerous. Transitions are also always opportunities to foster love and flourish community. As the womxn at the transitional house can attest, we are better able to face challenging times when we have a community of support, and when we know there is stability and permanence. This is why Safehouse is committed to growing its services to provide permanent supportive housing. This is why your support helps to grow not just the Safehouse community but the community beyond it.

Thank you for being a part of the work of Safehouse!

BOARD OF DIRECTORS

Julietta Hua

President

Pamela Merchant

Secretary

Alan Becker

Treasurer

Alan Becker

Anil Cornelo

Colleen Ma

Juliann Sum

June Faison

Mattison Ly

Sandra Nuñez

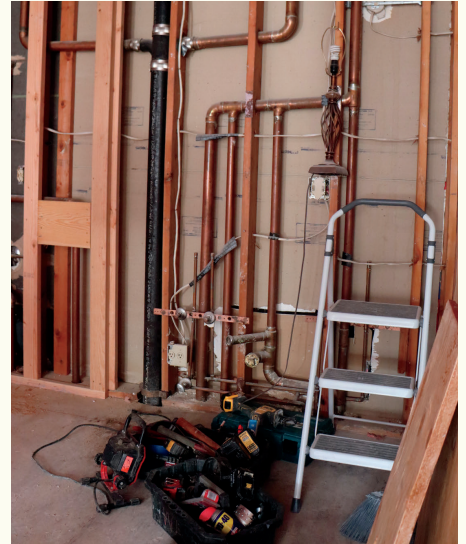
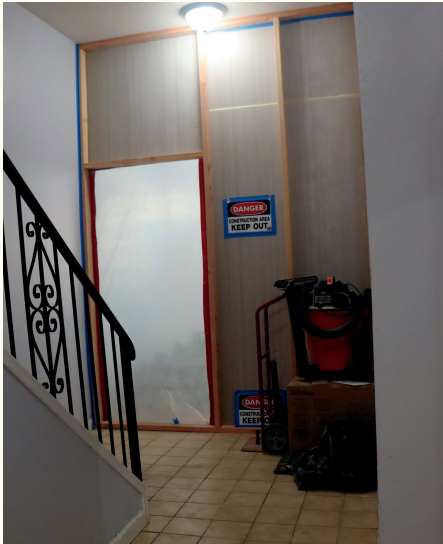
Sean Saxton

Sister Rosina Conrotto

Susan Philip

Susie Monson

NEW ADA RENOVATIONS



Construction at our Transitional House is nearly complete! Thanks to our amazing donors' support, we were able to renovate our transitional home for ADA accessibility. We remodeled the entryway to remove the step and add a ramp, converted an old kitchen that was used as storage space to an ADA-accessible bathroom, and remodeled the existing communal kitchen. We also have two extra housing units and will be adding a chair lift to the stairs.

Transformation and Growth

Toni Eby, MSW, Executive Director



While sitting here thinking about how much the SafeHouse program has grown and changed over the last 24 years, I think of all the womxn we have seen come through our doors.

I think of the first graduate from 24 years ago who is pursuing her passion while also enjoying life with her grandchildren, the graduate from 20 years ago that has her own design firm, the woman from 17 years ago that started her own environmental nonprofit, the graduate from 10 years ago that is now an executive chef, the woman from five years that called to talk about her promotion to manager, and the woman that graduated last year that wants to come volunteer and give back to the program. I think of the five women that graduated from the transitional residence this year and moved into permanent housing, the 36

“

"SafeHouse has changed hundreds of lives over the past 24 years, but also the program itself, like a butterfly, has also evolved, transformed and changed into something even more beautiful than in the beginning."

”

women that got emergency housing vouchers, and the 20 women still in our housing programs. I'm excited to see what the future holds for each of them.

SafeHouse has changed hundreds of lives over the past 24 years, but also the program itself, like a butterfly, has also evolved, transformed and changed into something even more beautiful than in the beginning. SafeHouse started off as a dream of our founders, but quickly evolved into a ground breaking program in the late 90's.

Program policies evolved with best practices, and as we see the need for services grow the program itself has expanded to meet the need. One of the things I'm most proud of is the opening of the Hope Center. This meant SafeHouse expanded from being able to serve about 20 women a year to over 100 women a year. I smile every time I walk into the center and see a client that is excited to tell me about the housing they got into, the school program they are starting, or the new job they obtained. With all the amazing changes and expansion we have gone through the last few years, we are still excited of the changes to come. The staff at SafeHouse want to thank you for being part of our journey, and hope you continue to join us as we expand and grow.



*We serve over 100
women a year.*

A photograph of a woman with her hair in a bun hugging a young child from behind. They are in a park-like setting with trees and a path, with a warm sunset glow in the background. The text 'ROLE MODELS FOR DOING THE WORK' is overlaid in large white letters.

ROLE MODELS FOR DOING THE WORK

By Jazmyn Brown, Associate Director

When I joined the team at SafeHouse in 2019 as a Program Manager, I had no idea that in less than a year, the organization and the world would be facing one of its most difficult challenges to date, a global pandemic. I also had no idea that in less than 2 years, I would transition into the role of Associate Director, an opportunity that has allowed me to support the agency's development as it relates to organizational practices, policies, and vision.

Being able to experience this and all of the ever-changing circumstances at SafeHouse, has definitely been one of the most rewarding aspects of the job. Our team and the women we serve have repeatedly demonstrated the ability to endure change of all different kinds and





"I know how important it is to have access to supportive services."

utilize any circumstance as a means of transformation.

Everything from how SafeHouse delivers services to how we're able to connect with the community and support staff has continued to change and improve, especially over the past few years. From navigating new COVID-19 guidelines to creating space for our teams to connect more consistently and eliminating barriers to access for our clients. As someone that has worked with vulnerable and marginalized populations for years and as a survivor from those same communities, I know how important it is to have access to supportive services. Even more important is the organizations' ability to meet the needs of the community, especially in times of crisis and uncertainty.

SafeHouse and the communities we serve have consistently proven to be pillars of hope, resilience, and transformation. I'm so appreciative of the agency's work towards supporting other survivors and the ability to be a part of the work being done here.

UPDATES FROM THE HOUSE

RHEE PATES, PROGRAM MANAGER

The Transitional Residence has been in an onward motion for the year of 2022. Providing services to our clients in the midst of a pandemic when no one has an answer to anyone's future, is heroic to say the least; and the staff of the Transitional Residence is just that. Providing services to fourteen womxn and successfully graduating five, the house is off to new heights. The staff is grateful for the opportunity to be good to each other this year, while ensuring the residents were safe and happy.

The case managers are learning how to support our residents with resources that were identified and are newly created in the pandemic; as well as building community networks to further create opportunities. For example, during the pandemic, Emergency Housing Vouchers became available for the first time in several years, and Case Managers were given the opportunity to get some of our residents into new permanent housing of their very own.



"The Transitional House enjoys watching our residents learn how to thrive,"



Additionally, the residential counselors are a growing team with two new staff, Ana and Mercedes. Utilizing their strengths of trauma-informed care and personal experiences, each staff brings their own unique skill set to strengthen the care we provide. The Transitional House enjoys watching our residents learn how to thrive when given the opportunity to learn how to be your better self. Every success is worth a celebration! The staff would like to highlight residents who have been utilizing Sharon, our Residential Counselor, menus and learning how to cook. The growth from sandwich assembler to chef extraordinaire is absolutely awesome to watch!

It isn't always easy to say goodbye to our graduates, as supporting them for almost two years in this transitional program is an act of love. Luckily, our graduates visit often to say "hi" and encourage the new residents to keep moving forward. We look forward to many more successes in the Transitional Residence and are so grateful for the opportunity to impact the lives of these amazing womxn.

By Angela Green

TRANSITION OF HOPE

Hope Center Program
Manager

OUR SERVICES

- Case Management
- Phone Charging
- Screening for SafeHouse Transitional Housing Program
- Computer Use
- Medical Services at the Sunflower Clinic
- Meals
- Hygiene Items & Clothing
- Space to relax, unwind, and build community

To transform is to imply a major change in form, nature or function; a transformation is a severe radical change. Such is the impact of Hope Center on the lives of the womxn that we serve.

For survivors of sexual exploitation, human trafficking, and domestic violence, the trauma inflicted upon their lives often has relegated them to the fringes of society, leading to not only homelessness but also substance use, mental health issues, and estrangement from their families. For the dedicated staff at Hope Center, assisting participants in overcoming these obstacles can be a daunting and sometimes seemingly impossible task to accomplish; yet we continue to prevail; more often than not, learning in the process.

Hope Center, which opened in September of 2019 only to be restricted to limited services in March of 2020 because of the COVID pandemic, returned to full-service operation in April of this year.

Since its return to full service, the Hope Center has served an average of 25 participants daily. Over the past 6 months, more than 40 womxn were housed through our Rapid Rehousing and Emergency Housing Voucher (Section 8) programs; while our Emergency Hotel stay services provided 19 young womxn refuge from abusive living situations.



Not only is this the most critical time for those living on the streets, but we have been seeing more transitional-age youth (18-24 years old) who desperately need our services. We had a client state that she, along with several other youths, had heard about our services, but were unable to access the agency because their trafficker kept a close watch on them during the day. It is cases like this and many others that makes it imperative to provide a safe space for this vulnerable community.

Through our collaboration with St. James Infirmary, we are able to offer a drop-in “street medicine” clinic, which we have named “Sunflower,” each Thursday. This team, who consists of a nurse practitioner and a registered nurse, provides wound care services, along with basic medical screenings and the monitoring of participants living with chronic illnesses (such as HIV, Diabetes, etc.) Clients who need more intensive care and who do not already have a PCP (Personal Care Provider) are then referred to the clinic at St. James Infirmary.

And we are growing and expanding. Soon, we are hiring a mental health clinician, who will provide psychoeducational and support groups, as well as therapeutic services to individual clients. Free legal services for our clients is also on the horizon through our partnership with “Justice-at-Last.” Beginning in early 2023, Hope Center hours will be extended to midnight on weekdays; an extremely important step in allowing us the opportunity to increase the number of lives we are able to impact.



"Beginning in early 2023, Hope Center hours will be extended to midnight on weekdays; an extremely important step in allowing us the opportunity to increase the number of lives we are able to impact."

IT TAKES A COMMUNITY

By Yves-Langston Barthaud, Development and Outreach Manager



Over the last few years, San Francisco SafeHouse has been placing itself in the forefront of womxn's housing advocacy. Through creating the San Francisco Women's Housing Coalition to its expansion of programming, SF SafeHouse is continuing to take the mantle in not only providing a voice for the voiceless but also safe spaces for those who have none. As we look forward, it's become clear that we are only scratching the tip of the iceberg.

SafeHouse runs one of the most successful transitional housing programs in California. With an 86 percent graduation rate and continued follow-up services for a year after, SafeHouse clients find success in remaining off the street and in permanent housing. However, in the last year, our waitlist has grown from 40-50 unhoused womxn to 120. We currently don't have enough capacity to meet the increased demand. So, what can we do? For one, we are increasing the hours at our drop-in center, The Hope Center. Currently, the Hope Center is open from 9 am to 5 pm Monday through Thursday. We will be increasing those hours until midnight. It is absolutely imperative for us to provide a safe space for unhoused womxn during late hours.



“

"We, as an organization, strive to do better, and push past the boundaries and the limits that oppose us."

”



Secondly, SafeHouse is working with the City of San Francisco to find a new building to provide long-term transitional housing, up to six years, and new womxn's only permanent housing. While most transitional housing programs generally last up to two years, SafeHouse and other like-minded organizations have realized that is not long enough for everyone. Some clients, their obstacles and challenges can take years to overcome. A woman who has been trafficked here from another country with no work experience or documentation, needs more time and resources to navigate the legal and social challenges presented to her. A longer or more permanent solution is required.

This new challenge to accommodate our growing waitlist is one we are taking head on. And while we continue to create new programs, and come up with new creative solutions, we need the support from our entire community. With an increase and expansion comes the need for more materials, more staff, and more support. As we have stabilized over the past year, increased the Transitional Housing Program with new units, made the Rapid Rehousing Program permanent, it's not enough to rest on our laurels. We, as an organization, strive to do better, and push past the boundaries and the limits that oppose us. Permanent housing and long-term transitional housing are the next steps. And while SafeHouse remains the leader in this field, to get there it will take the entire community.

Who we served



San Francisco SafeHouse was founded in 1998, and since then, we have provided safe housing to hundreds of unhoused womxn experiencing sexual exploitation. Many of these survivors are from historically marginalized and underserved groups, facing additional barriers when seeking help and services.



- 72% -have some form of cognitive, physical, or mental disability
- 81% -were women of color
- 36% -were women of trans experience or gender non-conforming

- 100% - were homeless or marginally housed with experiences of sexual violence
- 36% -are Immigrants, refugees, or asylum seekers
- 77%-experienced multiple overlapping forms of violence

We served 113 womxn & housed 82 womxn

HOW TO GET INVOLVED?



- Go to [sfsafehouse.org](https://www.sfsafehouse.org) and click on WishList. You will find everything from PJ's to cookware to toothbrushes.
- Have an item on the list or something else you wish to donate? Send us an email to info@sfsafehouse.org or kaylena@sfsafehouse.org



- Make a donation on our website at <https://www.sfsafehouse.org>
- Donate through our text to give number - 801801 SAFE
- Send a gift card from Home Depot, Amazon, and Costco
- Organize a fundraiser for SafeHouse

H A P P Y - H O L I D A Y S
H V B B A - H O G I D V A 2



San Francisco SafeHouse
P.O. Box 40369,
San Francisco, CA 94140-0369

GRADUATE SPOTLIGHT

First and foremost, I'd like to give the utmost respect to San Francisco SafeHouse. I was fortunate enough to enter SafeHouse which was a life changing opportunity and experience. I owe my sister a thank you for getting me into Friendship house, and also my former Case Manager there for getting me into SafeHouse.

I've learned so much from independence to confidence and security. I've learned to live on my own with the help from SafeHouse. The program helped me get a job and my own apartment. My Case Manager Carly is a gift from God "Doing God's work!" Carly takes her job seriously, and definitely gets her job done. Thank you, Carly, for teaching me to just ask when I need help, and for truly meaning it. Thank you to Ms. Roz and Ms. Sharon, my go to when I need an open ear or some advice. Jazmyn and all her beautiful hairstyles look different every time I see her, she's amazing with a great attitude.

I appreciate SafeHouse. I feel like I've matured through the program, made me the adult I am today; a wholesome, independent, indigenous woman.

**FOLLOW US ON
SOCIAL MEDIA**



www.sfsafehouse.org